

MONTAGEANLEITUNG



Modell-Nr.

70790

ART.-NR. FRONT KORPUS

70792

Rot
(ähnl. RAL 3002)

Silber

70797

Ultramarinblau
(RAL 5002)

Silber

70796

Silber

Schwarz
(RAL 9005)

Friedrich Küpper GmbH
Friedrich-Küpper-Weg
54570 Berlingen
Deutschland

Telefon +49 (0) 65 91 - 95 42 0
Telefax +49 (0) 65 91 - 95 42 17
E-Mail info@friedrich-kuepper.de
Internet www.friedrich-kuepper.de

EINZELTEILE / PIECES

1× **A**



450 mm × 450 mm

Art.-Nr. E0030 (Silber/silver)
Art.-Nr. E0031 (Schwarz/black)

1× **G**



1770 mm × 385 mm

Art.-Nr. E0052 (Silber/silver)
Art.-Nr. E0053 (Schwarz/black)

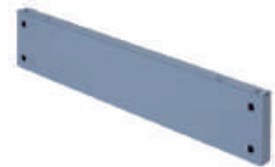
1× **C**



375 mm × 405 mm

Art.-Nr. E0039 (verzinkt/galvanised)

1× **J**



450 mm × 100 mm

Art.-Nr. E0066 (Silber/silver)
Art.-Nr. E0067 (Schwarz/black)

2× **E**



1770 mm × 430 mm

Art.-Nr. E0043 (Silber/silver)
Art.-Nr. E0108 (Schwarz/black)

1× **L**



1665 mm × 450 mm

Art.-Nr. E0078 (Silber/silver)
Art.-Nr. E0075 (Rot/red)
Art.-Nr. E0077 (Blau/blue)

10× **O**



375 mm × 395 mm

Art.-Nr. E0103 (verzinkt/galvanised)

3× **N**



450 mm × 380 mm

Art.-Nr. E0100 (verzinkt/galvanised)

1× **F1**



870 mm × 380 mm

Art.-Nr. E0051 (verzinkt/galvanised)

1× **E1**



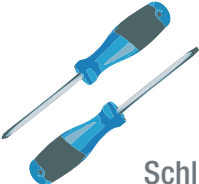





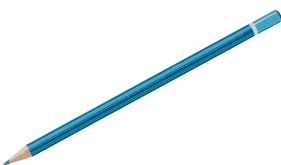


870 mm × 380 mm

Art.-Nr. E0046 (verzinkt/galvanised)

BEUTELINHALT / BAG CONTENT

 4x M6 x 16 mm Art.-Nr. E0750	 10x M6 x 12 mm Art.-Nr. E0751	 4x M6 x 16 mm Art.-Nr. 13002	 18x ø 6,4 mm Art.-Nr. E0753	 18x M6 Art.-Nr. E0754	 8x 6,3 x 16 mm Art.-Nr. E0744
 2x M4 x 10 mm Art.-Nr. E0755	 2x M4 Art.-Nr. E0290	 2x ø 4,3 mm Art.-Nr. E0757	 2x 5 x 15 Art.-Nr. E0760	 2x 5 x 5 Art.-Nr. E0759	 4x Art.-Nr. E0758
 4x Art.-Nr. E0761	 4x Art.-Nr. E0762	 2x Art.-Nr. E0763	 2x Art.-Nr. E0765	 1x Art.-Nr. E0766	 1x Art.-Nr. E0767
 1x Art.-Nr. E0770	 1x Art.-Nr. E0771	 1x Art.-Nr. E0772	 1x Art.-Nr. E0773		

BENÖTIGTES WERKZEUG / NEEDED TOOLS

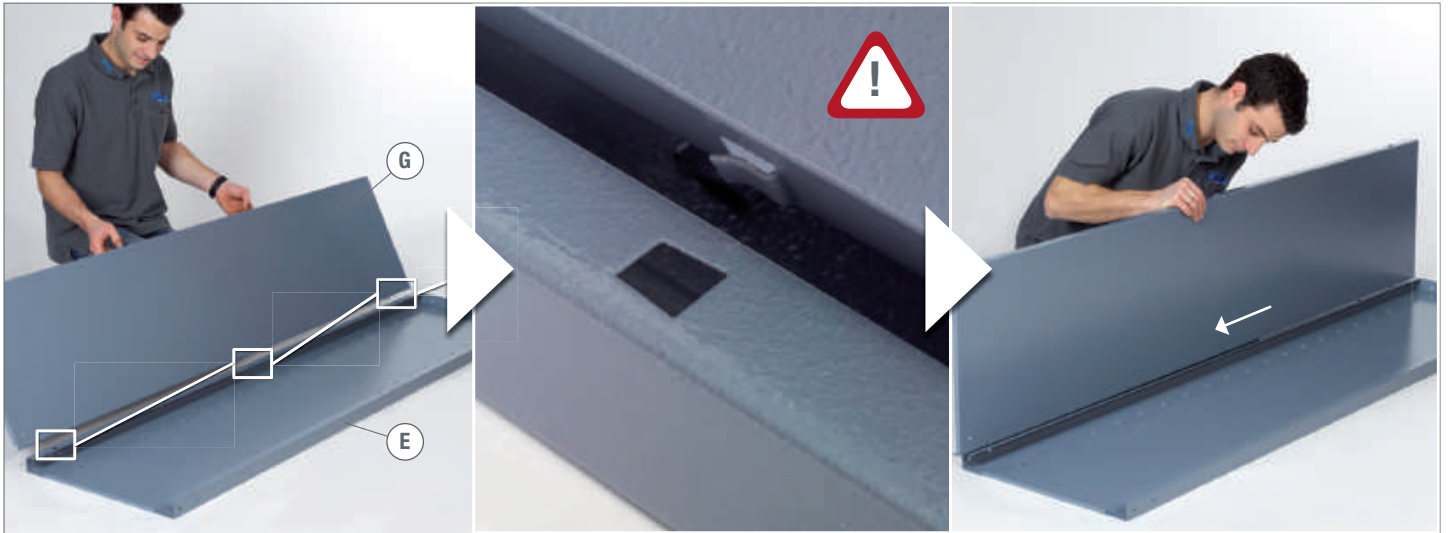
 ① PH 1 x 100 PH 2 x 100 Schlitz 6,5 x 150	 ② SW 7 SW 10	 ③ 6 mm
 ④	 ⑤	 ⑥ 5 mm
 ⑦	 ⑧	 ⑨

1.

① 
Schlitz 6,5 x 150



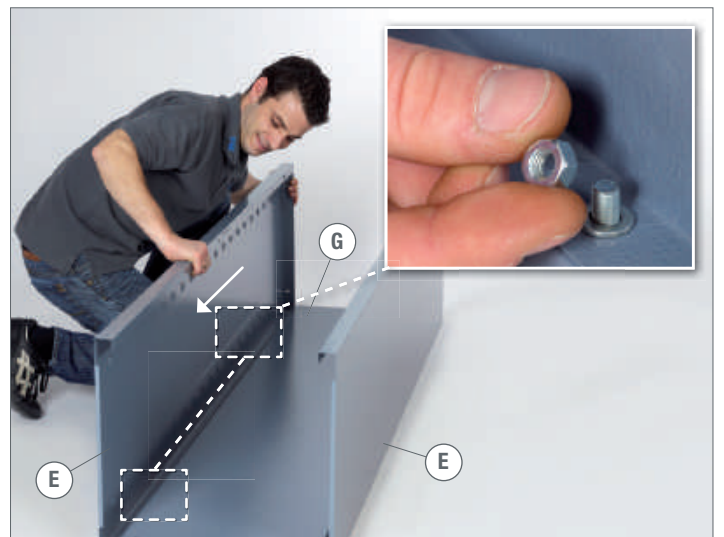
2.



3. 2x M6 2x M6 x 12 2x 6,4MM (2) SW10



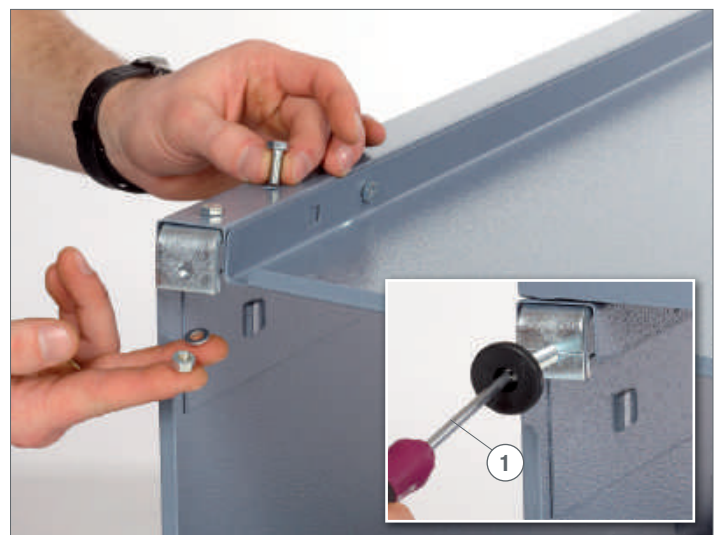
4. 2x M6 2x M6 x 12 2x 6,4MM (2) SW10



5. 2x



6. 4x M6 4x M6 x 16 4x 6,4mm 2x PH2x100 (2) SW10



7.  2x



8.  4x M6 x 16



9.  4x M6  4x 6,4 mm

⑥ 

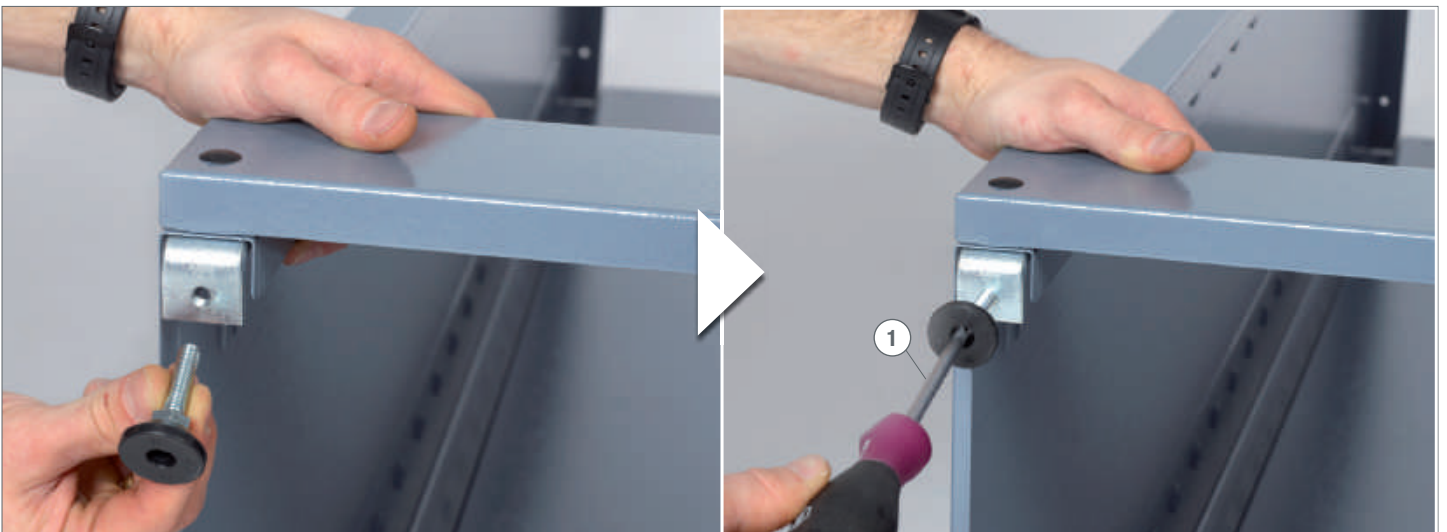


10.  4x



11.  2x

①  PH 2x100



12.



13.

4x M6 4x M6x12 4x 6,4 mm

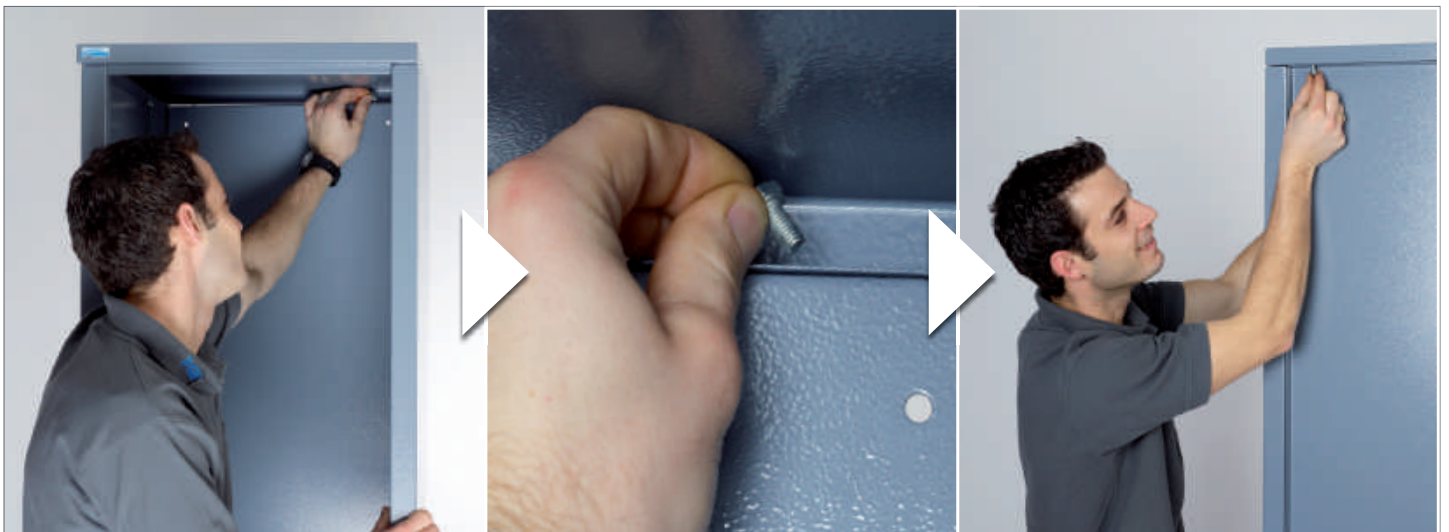
② SW10



14.

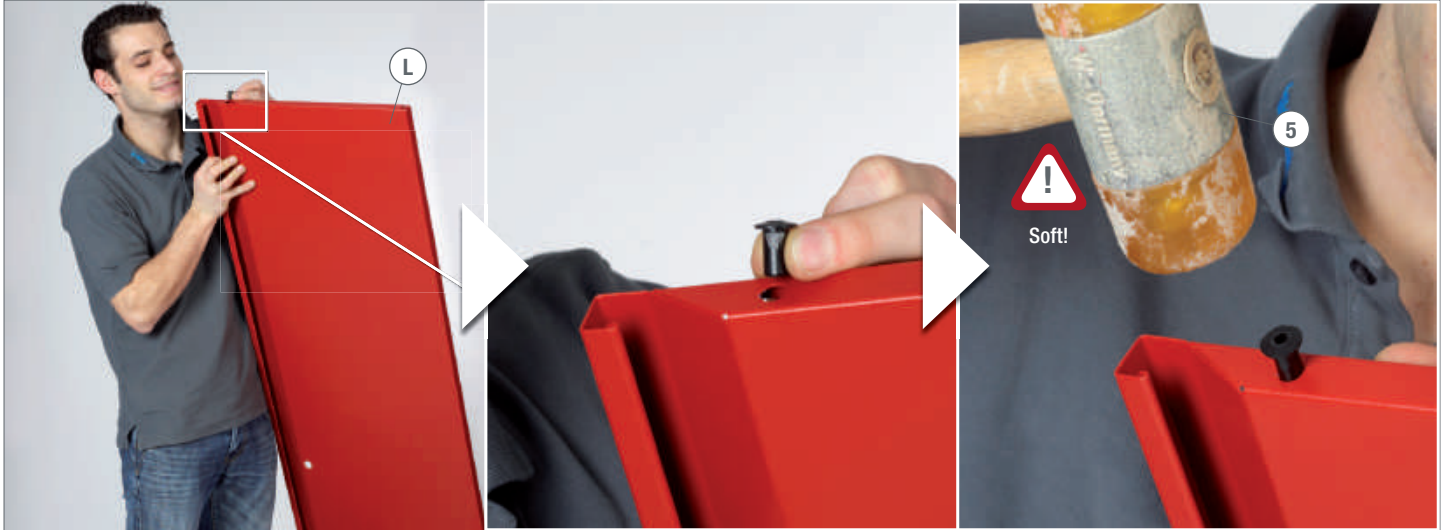
2x M6 2x M6x12 2x 6,4 mm

② SW10

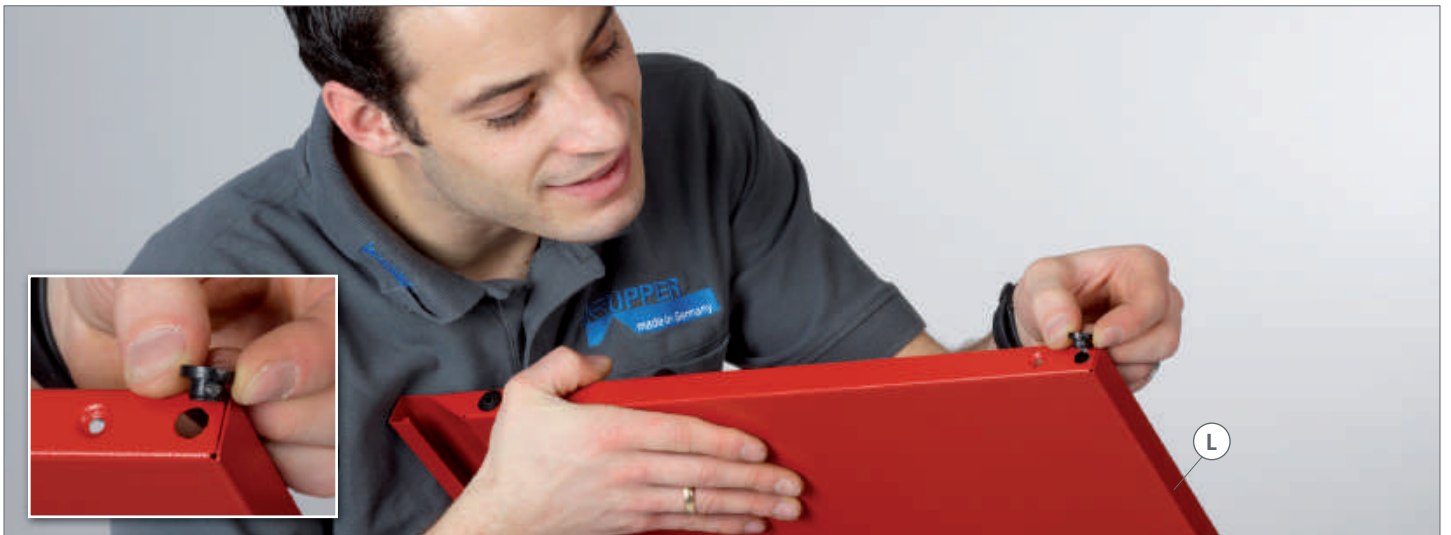


15.  2x 5x15

⑤ 



16.  2x 5x5



17.  1x



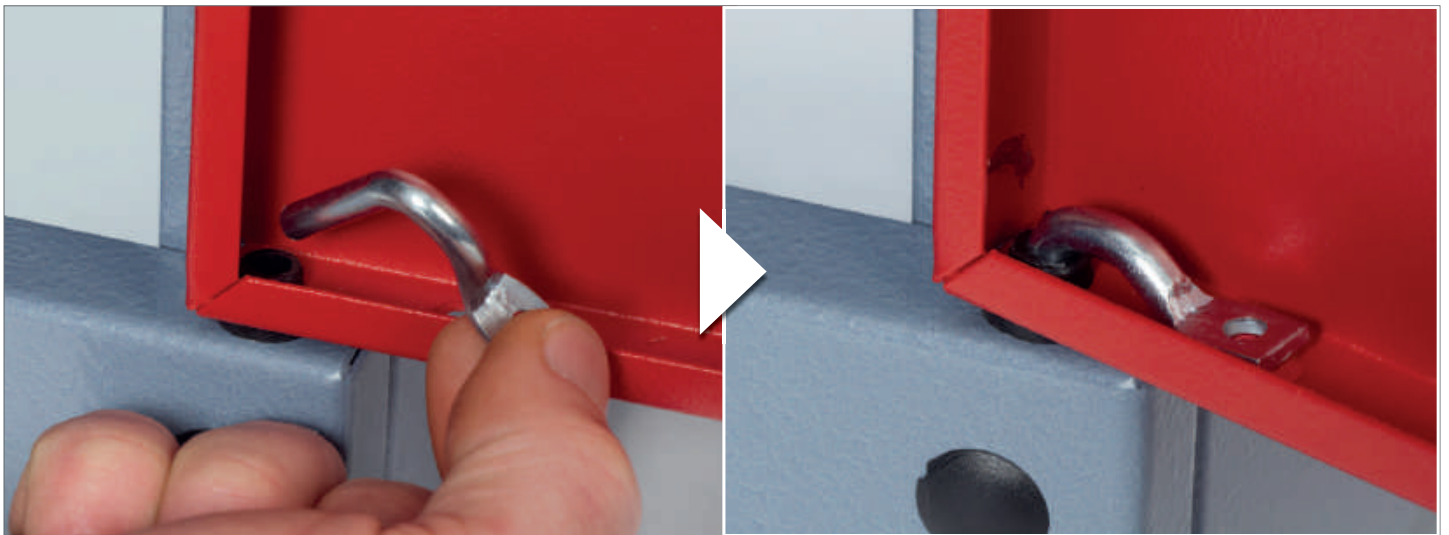
18.  1x M4  1x M4x10  1x 4,3mm  ① PH 1x100  ② SW 7



19.

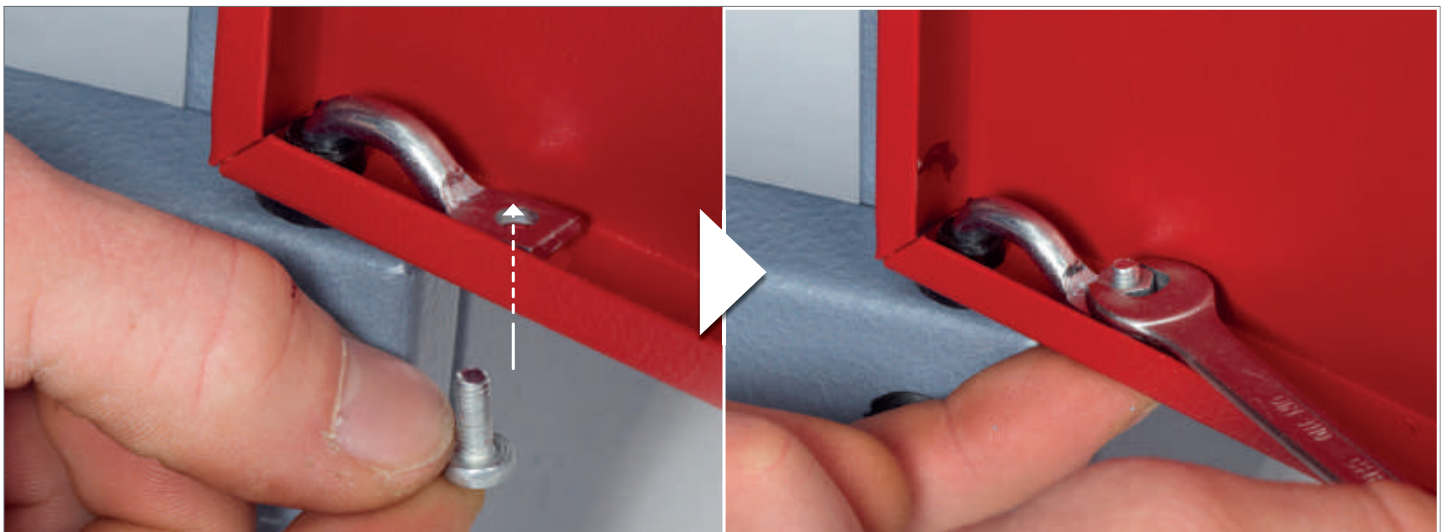


20.  1x



21.  1x M4  1x M4x10  1x 4,3mm

①  PH 1x100  ② SW 7



22.



9



23.

1x



24.

1x

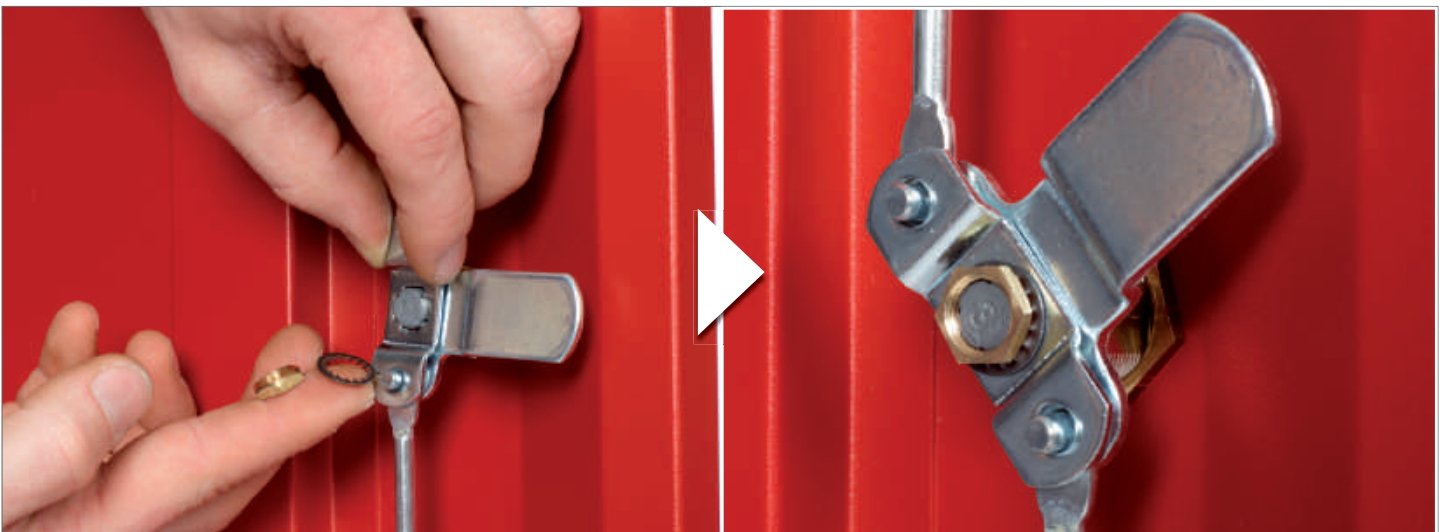


25.  1x



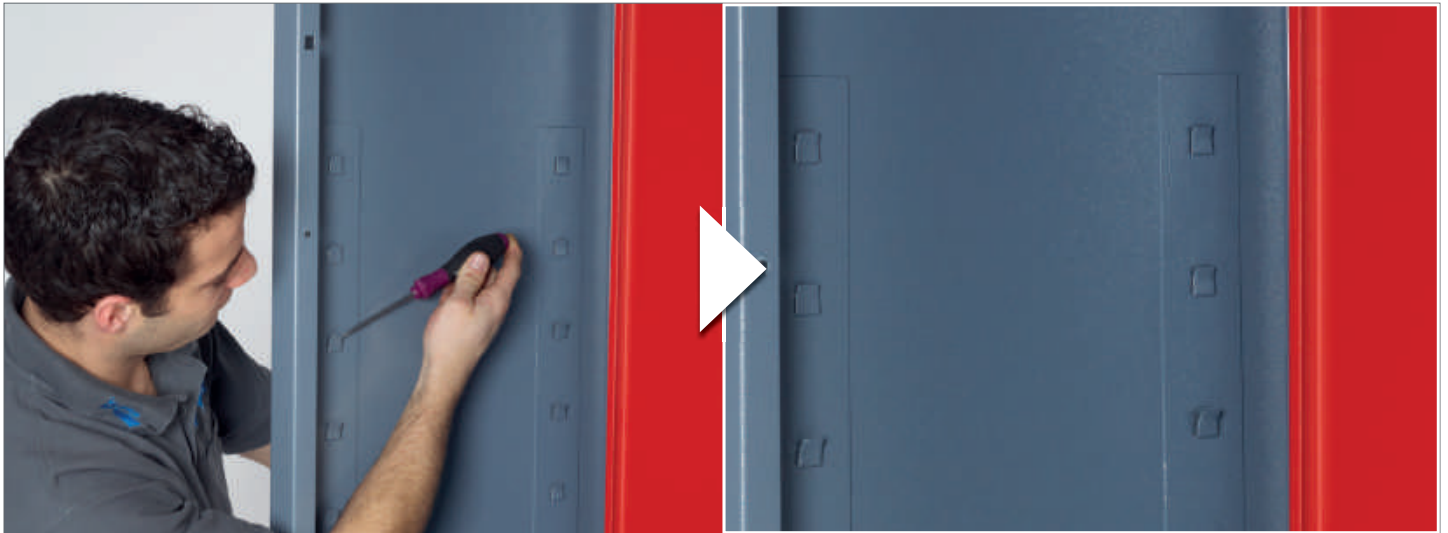
26.  1x  1x

⑨ 



27.

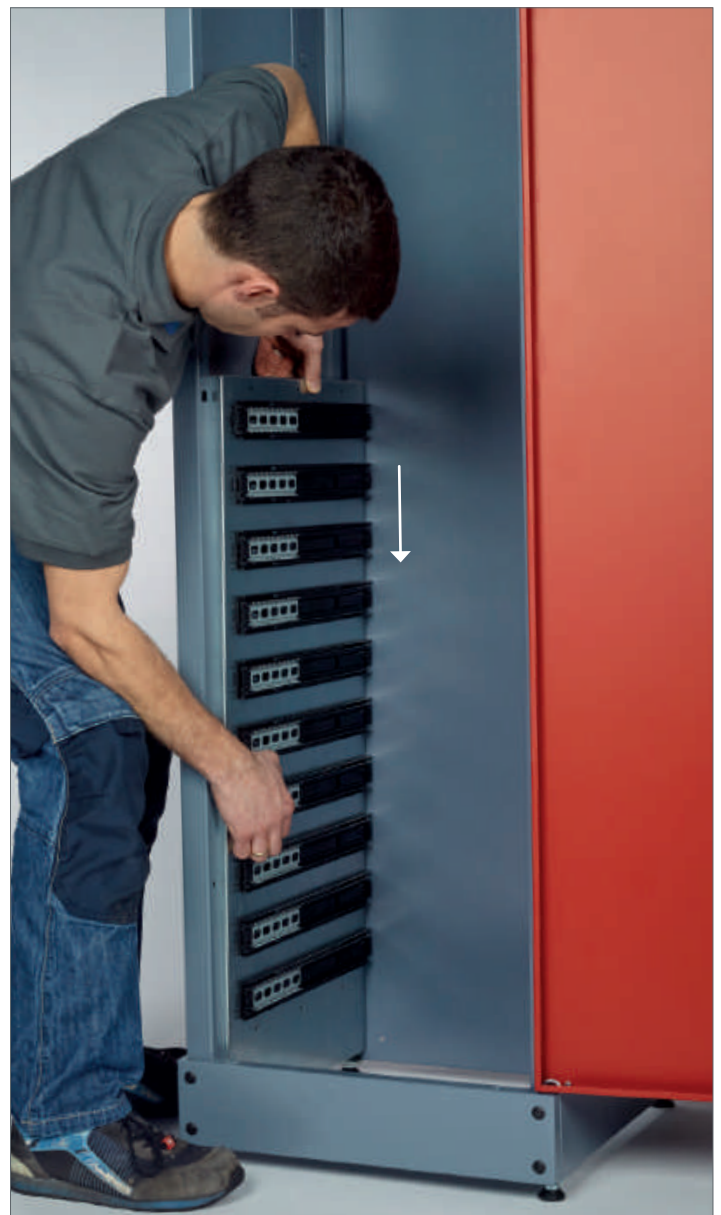
① 
Schlitz 6,5 x 150



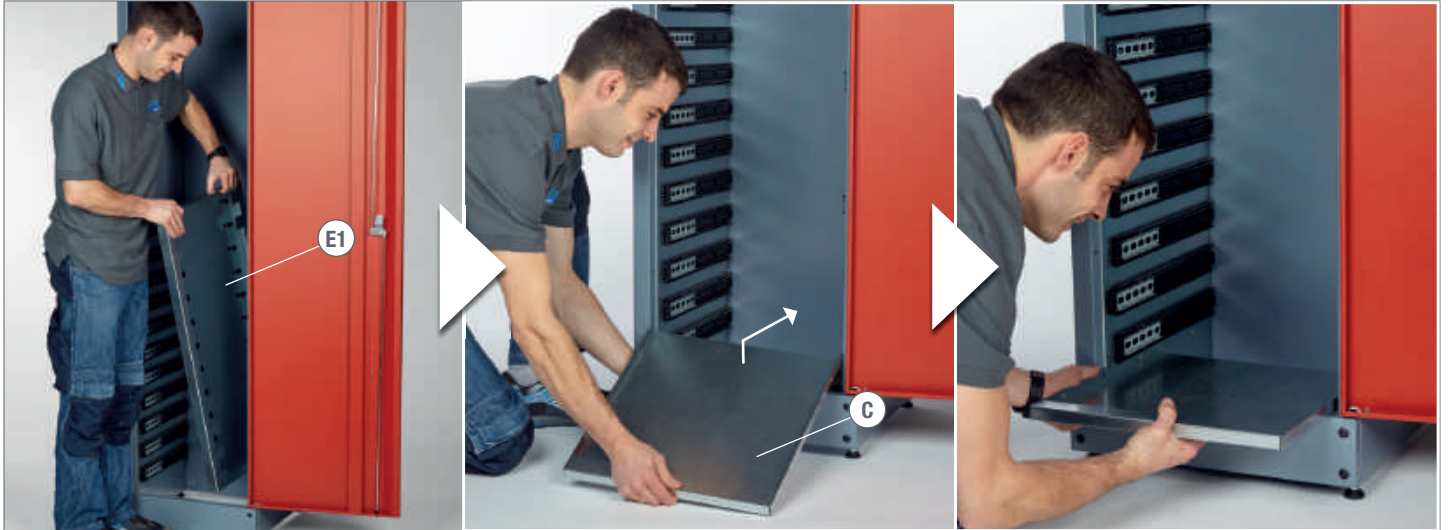
28.



29.



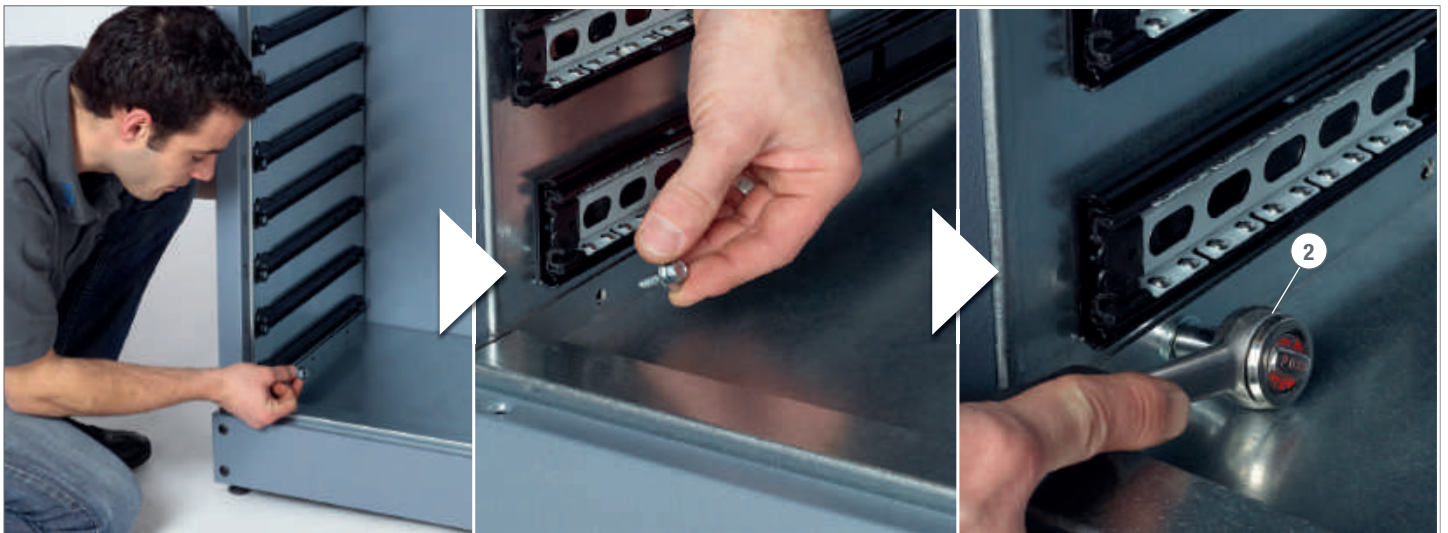
30.



31.

6 × 6,3 × 16

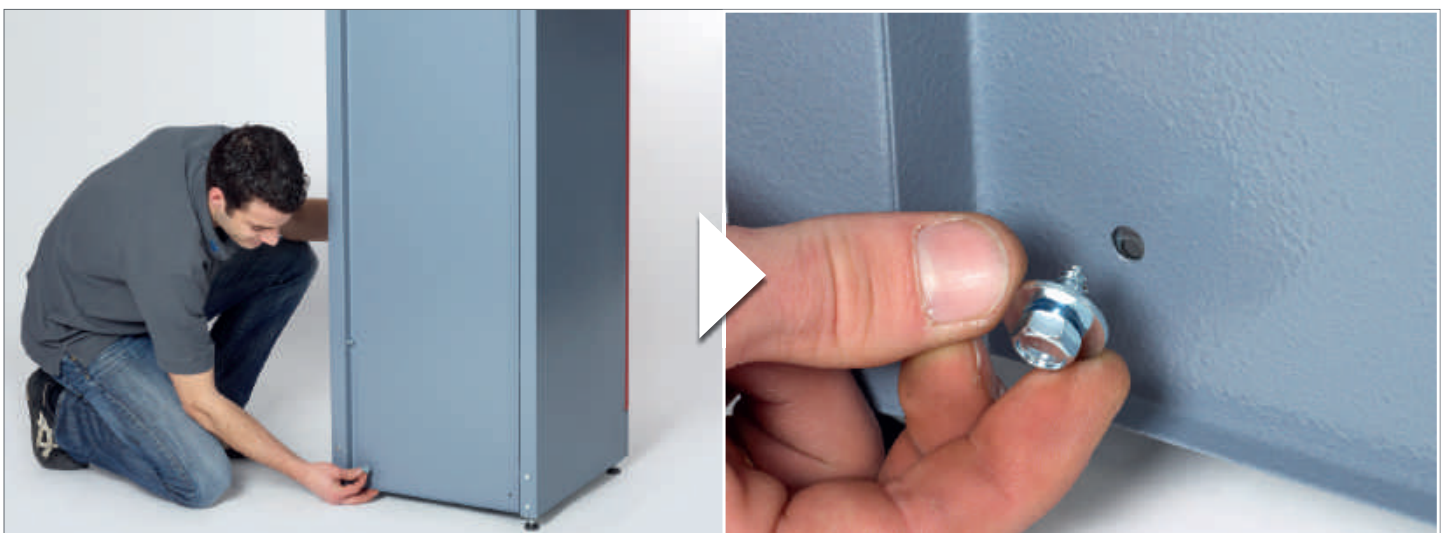
②  SW10



32.

2 × 6,3 × 16

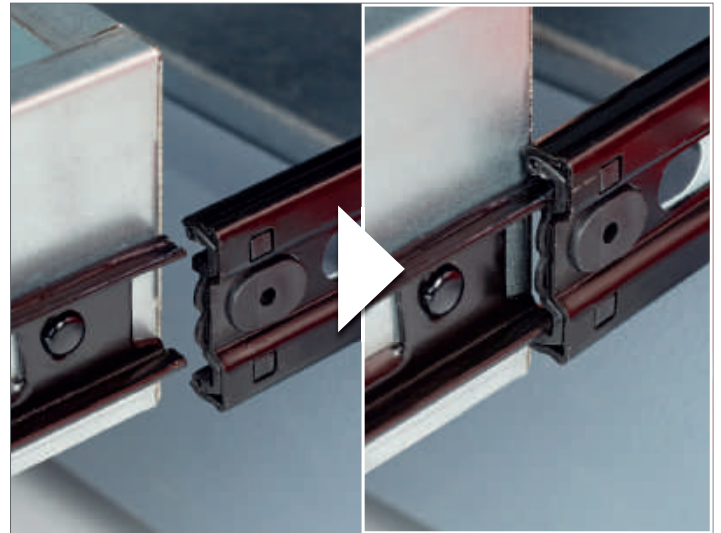
②  SW10



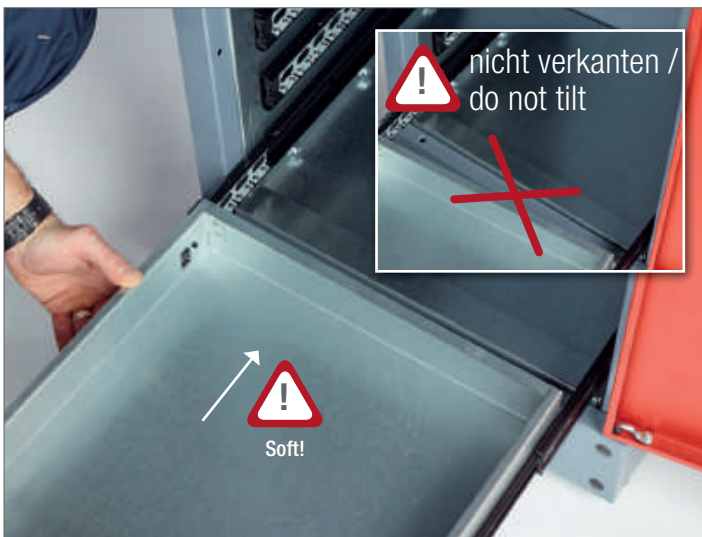
33.



34.



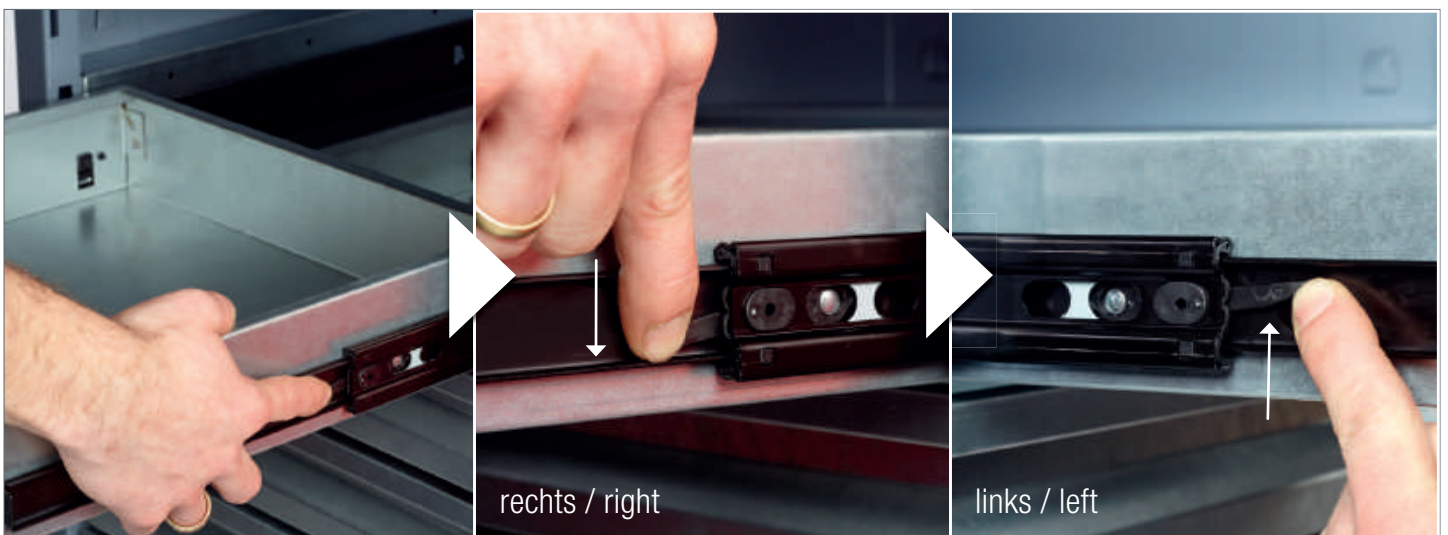
35.



36.



37.



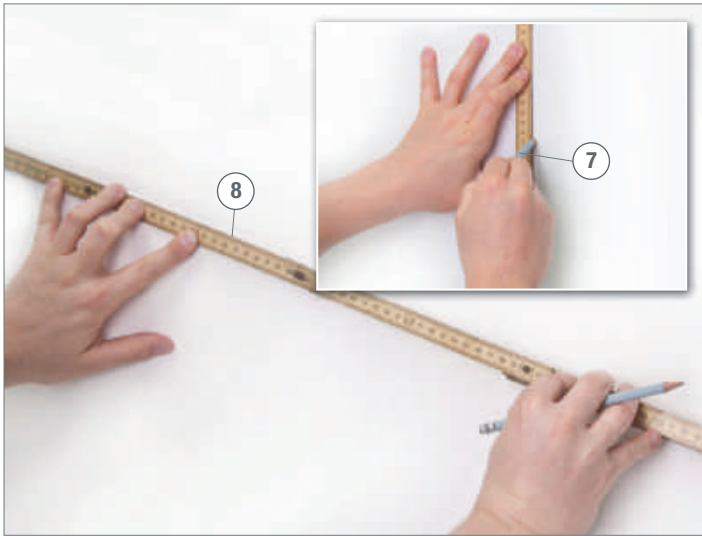
38.



39.




A.  



B.  



C.  Optional – nicht im Lieferumfang! / Not included!



D.  Optional – nicht im Lieferumfang! / Not included!



Modell-Nr.

70790